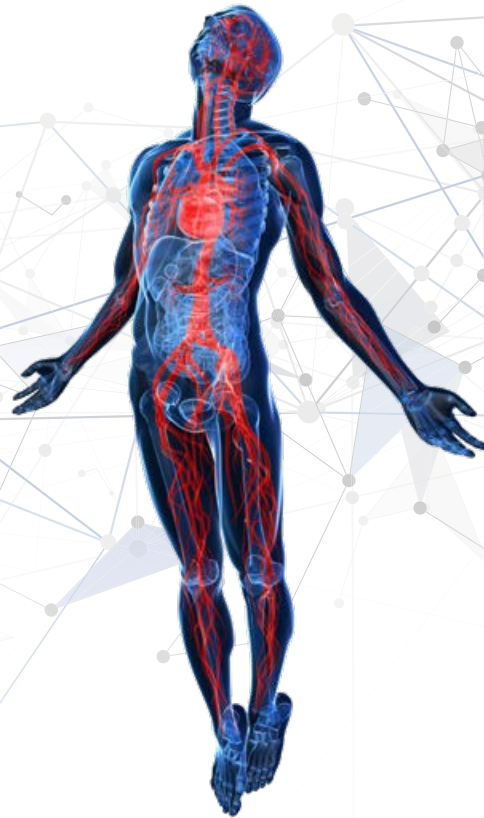




QBX 35^{6F}

Peripheral Balloon Expandable Stent System



A flexible 6F balloon-expandable stent
for easy deployment and precise placement

Up To **6F**

QBX 35^{6F}

Peripheral Balloon Expandable Stent System

The QBX 35^{6F} is a flexible, cobalt chromium stent mounted on an over-the-wire PTA balloon catheter.

It is designed for use in peripheral vessel diameters from 5.0 mm to 10.0 mm.

The QBX 35^{6F} is mounted on an 0.035" delivery system and is available in a full range of diameters and lengths with a shelf life of 2 years.

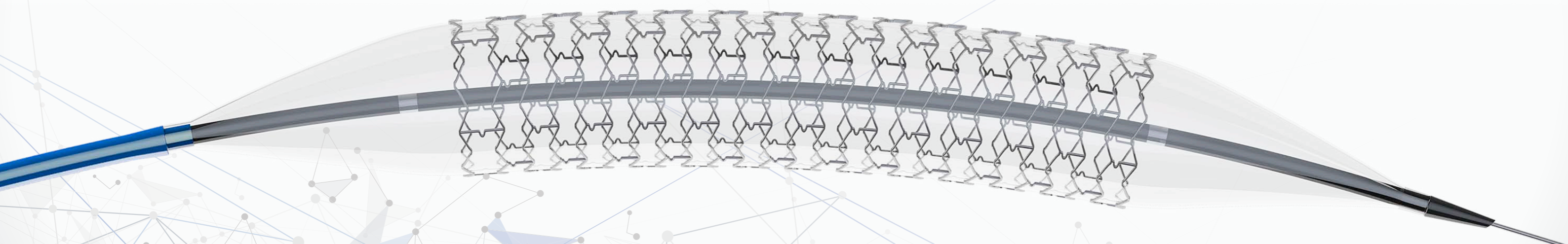
The QBX 35^{6F} Peripheral Balloon Expandable Stent System provides a means of safely advancing the stent through the peripheral vessels to the desired location.

COMPLIANCE TABLE

Pressure (bar)	Balloon Diameter (mm)					
	5	6	7	8	9	10
5	4.63	5.44	6.19	7.35	7.84	8.82
6	4.69	5.51	6.28	7.48	8.06	9.03
7	4.77	5.59	6.38	7.61	8.34	9.33
8	4.86	5.72	6.53	7.78	8.64	9.59
9	4.99	5.86	6.74	7.92	8.89	9.78
10	5.21	6.01	6.97	8.07	9.11	10.08
11	5.29	6.15	7.14	8.19	9.27	10.17
12	5.34	6.28	7.29	8.30	9.41	10.24
13	5.39	6.38	7.41	8.38	9.52	10.30
14	5.46	6.46	7.51	8.44	-	-
15	5.53	6.53	7.63	8.51	-	-
16	5.58	6.60	7.72	8.56	-	-
17	5.63	6.66	7.79	-	-	-
18	5.69	6.72	7.89	-	-	-

Legend:
Nominal Pressure
Rated Burst Pressure

Outer diameter of Balloon (± 10%)



KEY FEATURES

- > **6 F Introducer compatibility** for all sizes
- > **Low crossing profile** for all diameters
- > **Combination low shaft and tip entry profile**
- > **Soft, tapered balloon tip** for less trauma
- > **Flexible stent design**
- > **High radial strength**

BENEFITS

- > **Simple to use**
- > **Reduce puncture site diameter**
- > **Easy deployment and precise placement**
- > **Even and accurate stent expansion**
- > **Good accessibility and high pushability** across the peripheral vessels

QBX 35 6F

Peripheral Balloon Expandable Stent System

TECHNICAL SPECIFICATIONS

Product Name	PTA Balloon Catheter (PVQ)
Description	Expandable Stent System Semi-Compliant OTW
Material	Cobalt Chromium alloy
Lengths	17 26 36 57 mm
Recommended Guidewire	0.035" (0.89 mm)
Recommended Introducer Sheath	6 F
Nominal Pressure	9 bar
Rated Burst Pressure (RBP)	Ø 5 to 7 = 18 bar Ø 8 = 16 bar Ø 9 to 10 = 13 bar
Working Catheter Length	80 cm 120 cm 150 cm
X-ray Marker	2 markers (90% Platinum / 10% Iridium) at each balloon end, proximal and distal
Low Entry Profile	0.95 ± 0.025 mm (0.037")
Balloon Material	Nylon 12
Hydrophilic Coating	400 mm distal

ORDER INFORMATION

Usable Catheter Length **80 cm**

Diameter (mm)	Stent Length (mm)			
	17	26	36	57
5	08 QBX 050176F	08 QBX 050266F	08 QBX 050366F	08 QBX 050576F
6	08 QBX 060176F	08 QBX 060266F	08 QBX 060366F	08 QBX 060576F
7	08 QBX 070176F	08 QBX 070266F	08 QBX 070366F	08 QBX 070576F
8	08 QBX 080176F	08 QBX 080266F	08 QBX 080366F	08 QBX 080576F
9	08 QBX 090176F	08 QBX 090266F	08 QBX 090366F	08 QBX 090576F
10	08 QBX 100176F	08 QBX 100266F	08 QBX 100366F	08 QBX 100576F

Usable Catheter Length **120 cm**

Diameter (mm)	Stent Length (mm)			
	17	26	36	57
5	12 QBX 050176F	12 QBX 050266F	12 QBX 050366F	12 QBX 050576F
6	12 QBX 060176F	12 QBX 060266F	12 QBX 060366F	12 QBX 060576F
7	12 QBX 070176F	12 QBX 070266F	12 QBX 070366F	12 QBX 070576F
8	12 QBX 080176F	12 QBX 080266F	12 QBX 080366F	12 QBX 080576F
9	12 QBX 090176F	12 QBX 090266F	12 QBX 090366F	12 QBX 090576F
10	12 QBX 100176F	12 QBX 100266F	12 QBX 100366F	12 QBX 100576F

Usable Catheter Length **150 cm**

Diameter (mm)	Stent Length (mm)			
	17	26	36	57
5	15 QBX 050176F	15 QBX 050266F	15 QBX 050366F	15 QBX 050576F
6	15 QBX 060176F	15 QBX 060266F	15 QBX 060366F	15 QBX 060576F
7	15 QBX 070176F	15 QBX 070266F	15 QBX 070366F	15 QBX 070576F
8	15 QBX 080176F	15 QBX 080266F	15 QBX 080366F	15 QBX 080576F
9	15 QBX 090176F	15 QBX 090266F	15 QBX 090366F	15 QBX 090576F
10	15 QBX 100176F	15 QBX 100266F	15 QBX 100366F	15 QBX 100576F